

# Caldmore Primary Academy Newsletter



Issue 11 | Friday 17<sup>th</sup> November 2017 | [www.caldmore.attrust.org.uk](http://www.caldmore.attrust.org.uk) | Tel: 01922 721359

## IN THIS ISSUE

- Charity
- Football Team
- Attendance
- Stars of the Week
- Words of the Week

## DATES FOR YOUR DIARY

### Tuesday 28<sup>th</sup> November

Choir Performance at Forest Arts Centre. Tickets available at [www.forestartscentre.co.uk](http://www.forestartscentre.co.uk)

### Thursday 30<sup>th</sup> November

Year 1 Assembly at 2.45pm

### Monday 4<sup>th</sup> December

Year 1 trip to Space Centre

### Tuesday 12<sup>th</sup> December

Year 1 Parents' Workshop at 2.15pm

### Friday 22<sup>nd</sup> December

**SCHOOL CLOSED**



## THANK YOU!

Over the last few weeks there has been lots of fundraising activities for Macmillan and Children in Need. Thank you very much for your support.

Together we have raised...

£505.55 for Macmillan



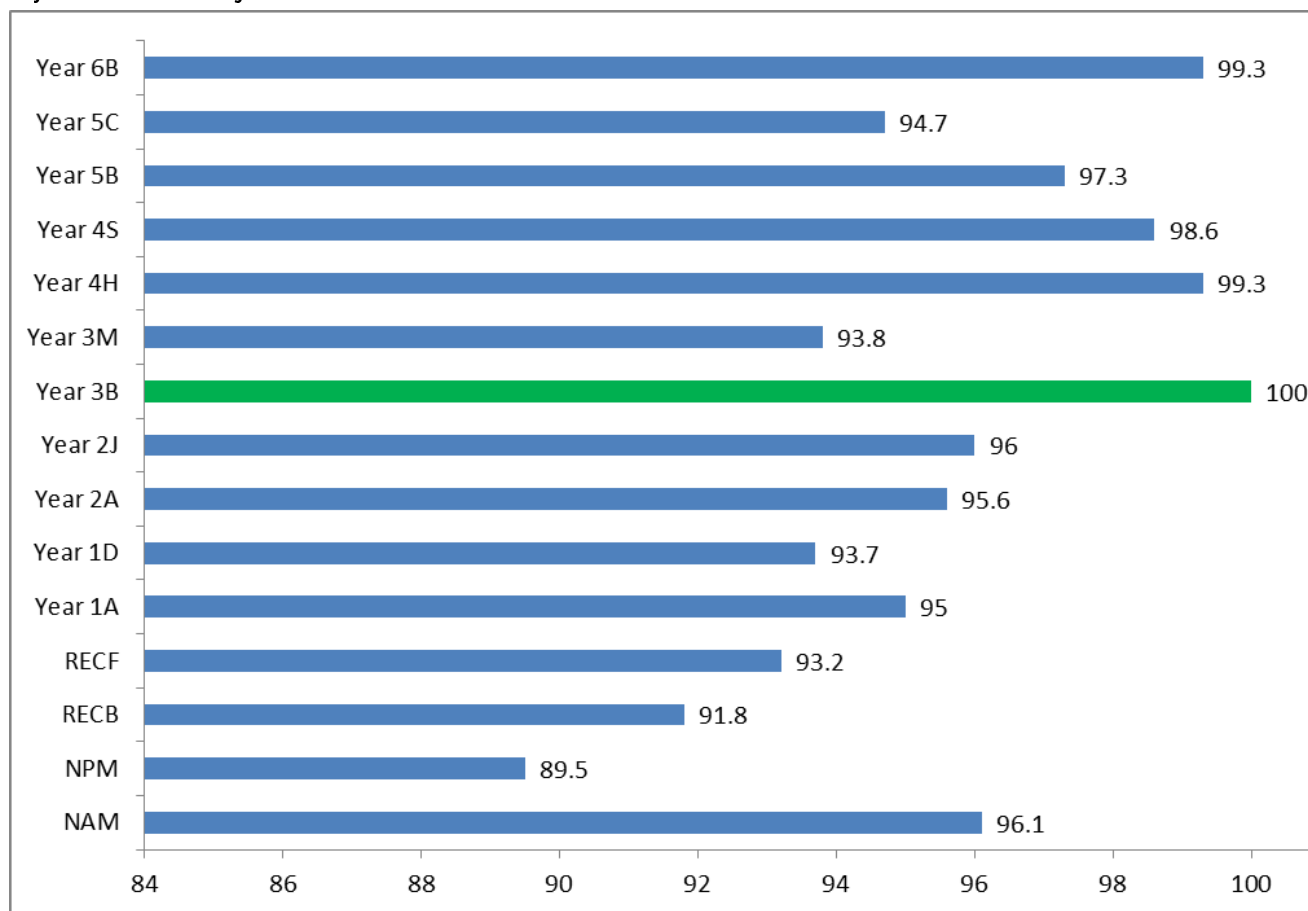
£476 for Children in Need



Congratulations to our fantastic football team who represented the academy brilliantly at their tournament on Wednesday! Huge thanks to Mrs. Brackstone and Mrs. Clarke for their help and support.

## Attendance

Children's attendance **must be 95% or above**. Prizes are awarded at the end of each term for all children who have an attendance figure of 96% or above. Below are the attendance figures for each class for the last week. **Well done to 3B!**



### STARS OF THE WEEK

★Ridwan, Saihaan, Muqaddas, Naasir, Fayaz, Zaynah, Eshmal, Tayyibah, Nabiha, Fiza W, Rubel★

### WORDS OF THE WEEK:

#### KS1

**Marvellous**

Adjective

Extremely good or pleasing



#### EYFS

**Hibernate**

Verb

to spend winter sleeping  
(animals)



#### KS2

**Artificial**

Adjective

Made or produced by human beings  
rather than occurring naturally

